



FRONT VIEW OF BRIDGEVIEW 12 DISPLAY

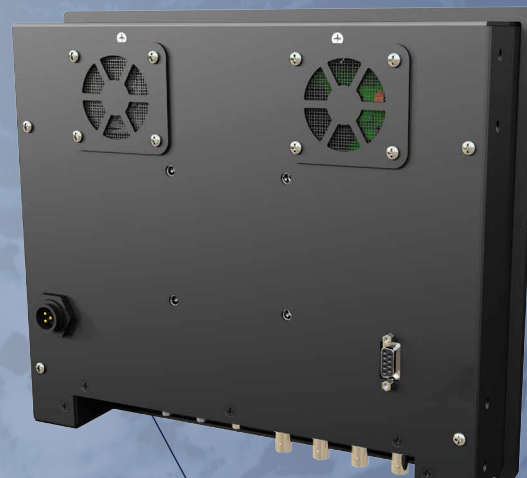
► BRIDGEVIEW DISPLAYS

Built on the same proven platform as our CG Elite monitors, Bridgeview LCD monitors offer excellent value and daylight readable performance. Available in sizes from 12" to 21.5" and with either AC or DC power input, Bridgeview monitors are the perfect choice for all of your display needs.

Standard features include marine grade aluminum construction, one-touch input selection, red monochrome night mode and dedicated backlit front controls. MarineNav displays are internationally known for their quality and reliability. All of our marine displays are backed with a standard 2 year warranty (2nd year with product registration). Available with optional integrated computer (15", 19" and 21.5" models only).

► FEATURES

- *Daylight readable performance*
- *Red monochrome night mode*
- *Picture-in-picture display*
- *Multiple video inputs*
- *Backlit front controls*
- *TFT Active Matrix Panel, LED backlight*



BACK VIEW OF BRIDGEVIEW 12 DISPLAY

► BRIDGEVIEW 12 DISPLAY SPECIFICATIONS

Features	BV-12
LCD Display	12.1" TFT Active Matrix Panel, LED backlight
Integrated Computer	Not available
Brightness	1000 nit
Contrast	1000:1
Resolution	1024 x 768 native
Optimized Multi-Resolution	Up to 1920 x 1200 supported
View Angle	160(H), 160(V)
Display Colours	262K
Temperature	-10 to 55C Operating, -20 to 70C Non-Operating
Video Inputs	2 VGA, 2 HDMI, optional DVI, 4 Composite
Other Inputs	Power, Serial
Input Power	9~30V DC input
Power Consumption	35~40 watts
Dimming	Wide dimming range to black
Picture-in-Picture	Yes
Bezel & Rear Case	High grade marine aluminum
Finish	Salt rated, UV protected powder coating
Window & Enclosure Options	Standard matte front panel, optional optical bonded front panel, optional IP65 from front and/or rear
Backlit Front Controls	Yes, with one-touch hotkeys
Bezel Dimensions	312 mm x 262 mm (12.28" x 10.31")
Chassis Dimensions	294 mm x 244 mm (11.57" x 9.60")
Install Depth	63 mm (2.49")
Installation Options	Console flush mount, VESA 75
FCC Approved	Yes
Video Detection/Scaling	Yes
Warranty	2 years (2nd year with registration *)

* Product must be registered within first warranty year.

MarineNav products are available in a multitude of configurations to provide maximum flexibility and user convenience. Contact us or visit our website at www.marinenav.ca for more details.

While we strive to ensure the accuracy of all items and descriptions in this document, this is not always possible. Specifications, options, and availability subject to change without notice. Errors and omissions excepted. We reserve the right to limit quantities.

MARINENAV
ISO 9001:2008 certified company

1466 Panmure Island Wharf, Montague, PE, CANADA C0A 1R0 +1 (902) 838-7011 • info@marinenav.ca • www.marinenav.ca