

MarineNav Sonar Systems

13" Standard Side-Scan Towfish



BUILT
NORTH ATLANTIC
TOUGH
TRUSTED
EVERYWHERE

D-001_Sonar_Systems-Side-Scan_Towfish_2026-PR1

Eliminate blind searches normally conducted by grapples, divers or ROV systems. Save valuable time by conducting wide sweep scans to track, mark and record GPS positions of interest.

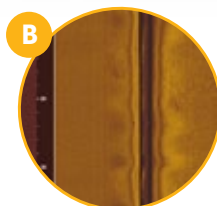
3 KNOTS MAXIMUM SPEED. RECOMMENDED RANGE TO SEABED 0 - 75 METERS

Manufactured on-site from marine-grade materials, MarineNav's 13" Standard Side-Scan Towfish is a portable sonar that is easily transported and deployed. Scan large areas of the seabed to spot anomalies, wrecks, ghost gear and other objects. The Side-Scan Towfish is towed beside, or behind your vessel while it is in motion to carry out a smooth survey of a target area simply by lowering or raising the sonar to a fixed depth, thus eliminating potential pitch and roll to provide smoother data. With GPS integrated into the screen, the Side-Scan Towfish sonar can also be used as a chart plotter and is compatible with most detailed marine maps including Navionics providing full navigational charts.



QUICK DEPLOYMENT AND SURVEYING CAPABILITIES

Standard Side-Scan Topside equipped with a 13" viewing screen. Powered by AC, DC or built-in rechargeable batteries. Deploy the Towfish over the side of boat, or from a Davit and start surveying an area in under five minutes.



THREE ADJUSTABLE SONAR FREQUENCIES

Adjust sonar to 3 adjustable frequencies of 455Khz, 800 Khz or 1.2MHz, higher frequencies provides more detailed scans of the seabed, while lower frequencies increase sonar scan range.

CREATE WAYPOINTS AND RECORD GPS LOCATIONS
Identify found objects and anomalies in real-time, and mark targets by creating touch activated waypoints that record GPS co-ordinates. All recorded data is saved for future dive-missions by your ROV system.

MARINENAV
BUILT NORTH ATLANTIC TOUGH.
TRUSTED EVERYWHERE.



© 2026 MarineNav Ltd.

1466 Panmure Island Rd – Rte 347
Panmure Island PE COA 1R0
902 838-7011
www.marinenav.ca

MarineNav Sonar Systems

13" Standard Side-Scan Towfish



D-001_Sonar_Systems-Side-Scan_Towfish_2026-PR1

Towfish Specifications:

Recommended Range to Seabed	0m-75m (0-246 ft)
Maximum Speed	3 knots
Length	1265.0 mm (49.80")
Height	252.0 mm (9.92")
Width	314.0 mm (12.36")
Towfish Tube Diameter	51.0 mm (2.00")
Weight (does not include Towfish cable)	3.72 kg (8.2 Lb)
Towfish Cable Length	9.1m (30.0 ft)
External GPS puck	Optional upgrade

Sonar Specifications:

Side-Scan Imaging Range	76.2m (250 ft) - 800 Khz 152.4m(500 ft) - 1.2MHz 243.8m (800 ft) - 455 Khz
Down Imaging Range (dependent on height from seabed)	76.2m (250 ft) - 800 Khz, 152.4m (500 ft) - 1.2 MHz 243.8m (800 ft) - 455 Khz
Standard CHIRP Sonar Imaging Range	28-250 Khz, 365.7m depth (1200 ft)

Topside Specifications:

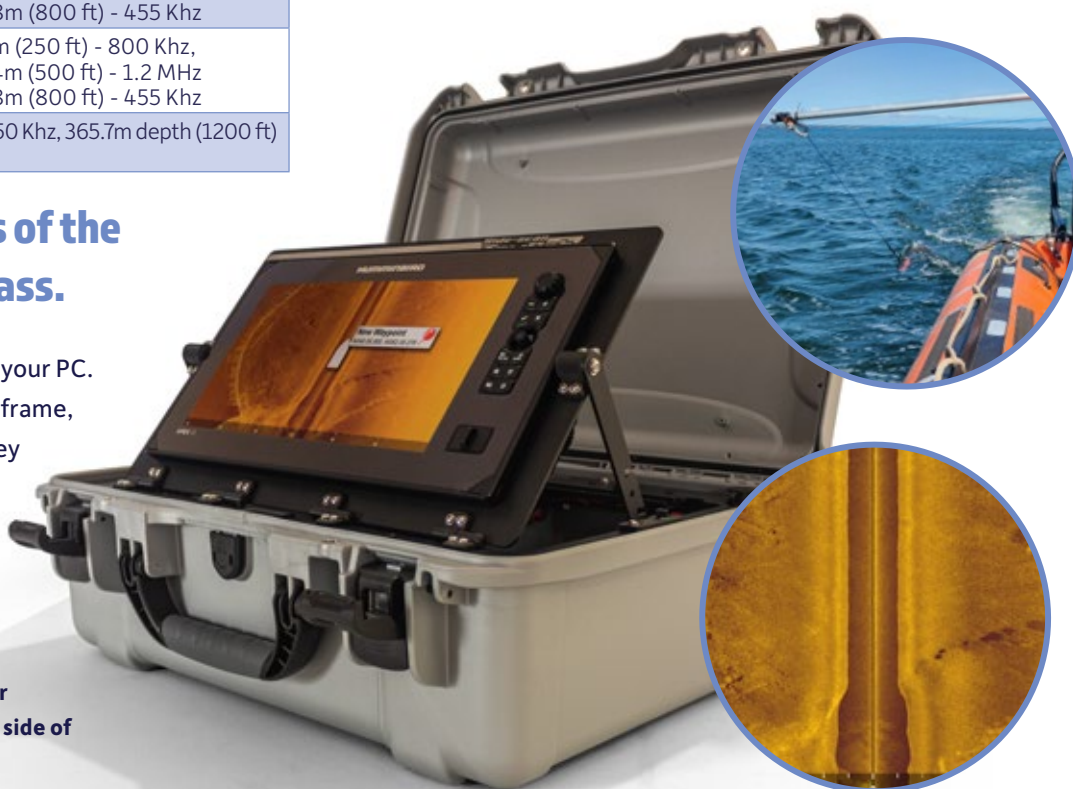
Length	508.0 mm (20.0")
Width	355.6 mm (14.0")
Depth	203.2 mm (8.0")
Weight (with standard 13" screen)	10.61 kg (23.39Lb)
Data Storage (removable SD card)	32 GB
Supply Voltage (V _{in})	9 - 36V DC, built-in AC power source (120/240V AC, built-in connectors for two plug-in Dewalt brand batteries)
Topside Display Size	330 mm (13.0")
Topside Software	ReefMaster - Sonar Viewer (basic software)

Easily scan large areas of the seabed with a single pass.

Record and replay captured data on your PC.
Review sonar sweep data frame-by-frame, forward and reverse and pause on key frames to evaluate sonar anomalies.
GPS co-ordinates can be marked via the provided PC software user interface.

At 455Khz, the Side-scan Towfish sonar covers a range of up to 800 ft on either side of your vessel.

The 13" Standard Side-Scan Towfish system includes ReefMaster Sonar Viewer software.



MARINE NAV
BUILT NORTH ATLANTIC TOUGH.
TRUSTED EVERYWHERE.



© 2026 MarineNav Ltd.

1466 Panmure Island Rd – Rte 347
Panmure Island PE COA 1R0
902 838-7011
www.marinenav.ca

MarineNav Sonar Systems

16" Premium Side-Scan Towfish



BUILT
NORTH ATLANTIC
TOUGH
TRUSTED
EVERYWHERE

D-001_Sonar_Systems-Side-Scan_Towfish_2026-PR1

Eliminate blind searches normally conducted by grapples, divers or ROV systems. Save valuable time by conducting wide sweep scans to track, mark and record GPS positions of interest.

4.8 KNOTS MAXIMUM SPEED. RECOMMENDED RANGE TO SEABED 0 - 150 METERS

Manufactured on-site from marine-grade materials, MarineNav's 16" Premium Side-Scan Towfish is a portable sonar that is easily transported and deployed to scan large areas of the seabed to spot anomalies, wrecks, ghost gear and other objects. The Side-Scan Towfish is towed beside, or behind your vessel while it is in motion to carry out a smooth survey of a target area simply by lowering or raising the sonar to a fixed depth, thus eliminating potential pitch and roll to provide smoother data. With GPS integrated into the screen, the Side-Scan sonar can also be used as a chart plotter and is compatible with most detailed marine maps including Navionics providing full navigational charts.

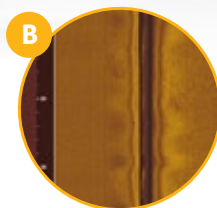


MADE IN CANADA



QUICK DEPLOYMENT AND SURVEYING CAPABILITIES

The Premium Side-Scan Topside equipped with a 16" viewing screen. Powered by AC, DC or built-in rechargeable batteries. Deploy the Towfish over the side of boat, or from a Davit and start surveying an area in under five minutes.



THREE ADJUSTABLE SONAR FREQUENCIES

Adjust sonar to 3 adjustable frequencies of 455Khz, 800 Khz or 1.2MHz, higher frequencies provides more detailed scans of the seabed, while lower frequencies increase sonar scan range.

CREATE WAYPOINTS AND RECORD GPS LOCATIONS

Identify found objects and anomalies in real-time, and mark targets by creating touch activated waypoints that record GPS co-ordinates. All recorded data is saved for future dive-missions by your ROV system.

MARINE NAV
BUILT NORTH ATLANTIC TOUGH.
TRUSTED EVERYWHERE.



© 2026 MarineNav Ltd.

1466 Panmure Island Rd – Rte 347
Panmure Island PE COA 1R0
902 838-7011
www.marinenav.ca

MarineNav Sonar Systems

16" Premium Side-Scan Towfish



D-001_Sonar_Systems-Side-Scan_Towfish_2026-PR1

Towfish Specifications:

Recommended Range to Seabed	0m-150m
Maximum Speed	4.8 knots
Length	1332.0 mm (52.44")
Height	285.0 mm (11.22")
Width	331.0 mm (13.03")
Towfish Tube Diameter	73.0 mm (2.87")
Weight (does not include Towfish cable)	5.95 kg (13.12 Lb)
Towfish Cable Length	18.2 m (60.0 ft)
External GPS puck	Optional upgrade

Topside Specifications:

Length	638.0 mm (25.12")
Width	505.0 mm (19.88")
Depth	224.0 mm (8.82")
Weight (with standard 13" screen)	14.00 kg (30.86 Lb)
Data Storage (removable SD card)	32 GB
Supply Voltage (V _{in})	9 - 36V DC, built-in AC power source (120/240V AC, built-in connectors for two plug-in Dewalt brand batteries)
Topside Display Size	406mm (16.0")
Topside Software	ReefMaster - ReefMaster Pro 2.0 (advanced software)

Sonar Specifications:

Side-Scan Imaging Range	76.2m (250 ft) - 800 Khz 152.4m (500 ft) - 1.2MHz 243.8m (800 ft) - 455 Khz
Down Imaging Range (dependent on height from seabed)	76.2m (250 ft) - 800 Khz 152.4m (500 ft) - 1.2 MHz 243.8m (800 ft) - 455 Khz
Standard CHIRP Sonar Imaging Range	28-250 Khz, 365.7m depth (1200 ft)

Easily scan large areas of the seabed with a single pass.

Record and replay captured data on your PC.
Review sonar sweep data frame-by-frame, forward and reverse and pause on key frames to evaluate sonar anomalies. GPS co-ordinates can be marked via the provided PC software user interface.

At 455Khz, the Side-scan Towfish sonar covers a range of up to 800 ft on either side of your vessel.

The 16" Premium Side-Scan Towfish system includes ReefMaster Pro 2.0 sonar software.



MARINE NAV
BUILT NORTH ATLANTIC TOUGH.
TRUSTED EVERYWHERE.



© 2026 MarineNav Ltd.

1466 Panmure Island Rd – Rte 347
Panmure Island PE COA 1R0
902 838-7011
www.marinenav.ca