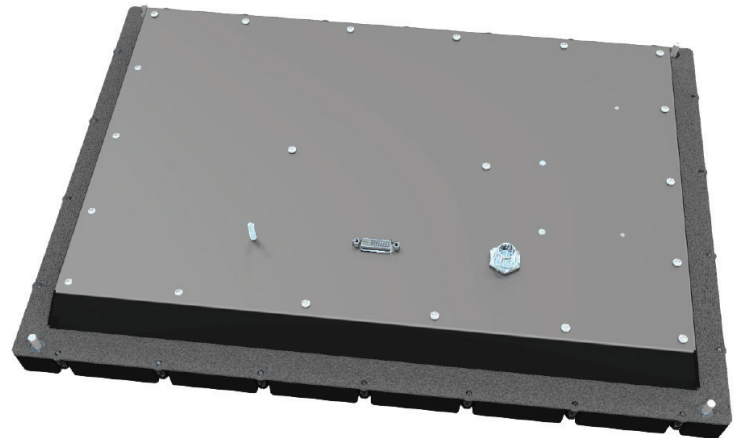


MarineNav Mil Spec 24

Marine Display

Proudly Canadian 
established
2005

A00177 MN Mil Spec 24 Sell Sheet-PR1



Rear view of Mil-Spec 24 display

MarineNav builds tough, true marine-grade displays capable of performing in the harshest environments on earth.

Internationally known for their quality and reliability, our displays are precision built from high strength marine-grade aluminum and finished in salt rated, UV protected powder coating inside and out.

Our Mil Spec series is designed exclusively for the Coast Guard, Defence, and Law Enforcement sectors. Increased bezel depth, tough exterior construction, and EMI shielding makes these displays more robust than our commercial series and ideal for extreme environments. With anti-glare/anti-reflective front glass, wide dimming range and available red monochrome night mode, these displays are easily viewable in most conditions. Front accessible mounting hardware is provided for dedicated, mission specific installations. All MarineNav displays offer a two year warranty (2nd year with product registration)*

MarineNav Ltd. is a registered (CGP) Controlled Goods Program facility.

All aspects of your build, (from research and development to manufacturing, to after-care support) is completed in-house at our facility in Prince Edward Island, Canada.

Mil-Spec 24 Features

- 300 nits brightness (upgradeable)
- Optional IP65 water-resistance front and rear
- EMI shielding
- Optional 1 VGA, 1 HDMI, 1 DVI, 2 composite
- Console flush mount
- Available in AC or DC
- Red monochrome night-mode
- TFT active matrix panel, LED backlight
- Two year warranty (2nd year with product registration*)

MARINENAV
BUILT NORTH ATLANTIC TOUGH.
TRUSTED EVERYWHERE.



© 2023 MarineNav Ltd.

1466 Panmure Island Rd – Rte 347
Panmure Island PE COA 1R0
902 838-7011
www.marinenav.ca

Mil-Spec 24 Marine Display

Specifications

Designed,
engineered &
manufactured
on-site. | MN

Features	MS-24
LCD Display	24" TFT Active Matrix Panel, LED backlight
Integrated Computer	Not available
Brightness	300 nits (upgradeable)
Contrast	1000:1
Aspect Ratio	16:10
Resolution	1920 x 1200 native
Optimized Multi-Resolution	Up to 1920 x 1200 supported with scaling
View Angle	170(H), 170(V)
Display Colours	16.7 Million
Operating Temperature	-15 to 55°C (5°F to 131°F)
Video Inputs	DVI (Optional 1 VGA, 1 HDMI, 1 DVI, 2 Composite)
Other Inputs	AC Power Input
Input Power	100~240V AC input
Power Consumption	60 watts
Dimming	Wide dimming range to black
Front Window	Optical bonded anti-reflective / anti-glare
Bezel & Rear Case	High grade marine aluminum
Finish	Salt rated, UV protected powder coating (internal and external)
Enclosure Options	Optional IP65 from front and rear
Bezel Dimensions	570 mm x 390 mm (22.44" x 15.35")
Chassis Dimensions	530 mm x 345 mm (20.87" x 13.58")
Install Depth	44 mm (1.73")
Installation Options	Console flush mount
FCC, CE Approved	Yes
Warranty	2 years (2nd year with registration)*

A00177 MN Mil-Spec 24 Sell Sheet-PR1

MarineNav products are available in a multitude of configurations to provide maximum flexibility and user convenience. Contact us or visit our website at www.marinenav.ca for more details.

* Product must be registered within first warranty year. Conditions apply. Contact a MarineNav representative or authorized distributor for full details.

MarineNav Ltd. is an ISO 9001:2015 certified company. Our certified Quality Management System ensures that each unit we produce adheres to the strictest standards and complies with customer requirements. While we strive to ensure the accuracy of all items and descriptions in this document, this is not always possible. Specifications, options, and availability are subject to change without notice. Errors and omissions excepted. We reserve the right to limit quantities.



MARINENAV
BUILT NORTH ATLANTIC TOUGH.
TRUSTED EVERYWHERE.



1466 Panmure Island Rd – Rte 347
Panmure Island PE COA 1R0
902 838-7011
www.marinenav.ca

© 2023 MarineNav Ltd.