

MarineNav Mariner 19

Marine Display

Proudly Canadian 
established
2005

A00177 MN Mariner 19 Sell Sheet-PR1



Back view showing optional field swappable integrated computer

MarineNav builds tough, true marine-grade displays capable of performing in the harshest environments on earth.

Internationally known for their quality and reliability, our displays are precision built from high strength marine-grade aluminum and finished in salt rated, UV protected powder coating inside and out. Developed to suit a variety of vessels from climate-controlled luxury yachting to more demanding IP65 rated open flybridge military/naval applications and everything in between, there is a MarineNav display suitable for your needs.

Built on the same proven platform as our CG Elite displays, Mariner LCD displays offer excellent value and daylight readable performance. Standard features include one-touch input selection, dedicated backlit front controls that are easy to see and use, and one-touch red monochrome night mode ideal for low light conditions. All MarineNav displays come with a two-year warranty (2nd year with product registration).

Mariner Series displays are available in 12", 15", 19", and 24" sizes and offer several options including enhanced brightness, front and/or rear IP 65 water-resistance, and composite inputs.

Mariner 19 Features

- Available in a variety of brightness options from 300-800 nits
- 1 VGA, 1 HDMI, 1 DVI, 2 composite
- Optional optical bonded glass front panel
- Optional daylight readable performance
- Optional IP65 water-resistance front and/or rear
- Backlit front controls
- Console flush or VESA mounting options
- Available in AC or DC
- Red monochrome night-mode
- TFT active matrix panel, LED backlight
- Integrated computer option
- Two year warranty (2nd year with product registration*)

Optional Integrated Computer Features

- Intel J1900 quad core, upgradeable
- 4 GB DDR3 RAM
- 120 GB solid state storage
- 2 USB 2.0 ports
- Optional field swappable unit
- Network port

MARINENAV
BUILT NORTH ATLANTIC TOUGH.
TRUSTED EVERYWHERE.



© 2023 MarineNav Ltd.

1466 Panmure Island Rd – Rte 347
Panmure Island PE COA 1R0
902 838-7011
www.marinenav.ca

Mariner 19 Marine Display

Specifications

Designed,
engineered &
manufactured
on-site. | MN

Features	MAR-19
LCD Display	19" TFT Active Matrix Panel, LED backlight
Integrated Computer	Available option
Brightness	Available in a variety of brightness options from 300-800 nits
Contrast	1500:1
Aspect Ratio	5:4
Resolution	1280 x 1024 native
Optimized Multi-Resolution	Up to 1920 x 1200 supported with scaling
View Angle	170(H), 170(V)
Display Colours	16.7 million
Operating Temperature	-10°C to 55°C (14°F to 131°F)
Video Inputs	1 VGA, 1 HDMI, 1 DVI, 2 Composite
Other Inputs	Power
Input Power	9~30V DC or 100~240V AC
Power Consumption	50 watts
Dimming	Wide dimming range to black
Front Window	Standard matte front panel, optional optical bonded anti-reflective / anti-glare front panel
Bezel & Rear Case	High grade marine aluminum
Finish	Salt rated, UV protected powder coating (internal and external)
Enclosure Options	Optional IP65 from front and/or rear
Backlit Front Controls	Yes, with one-touch hotkeys
Bezel Dimensions	455 mm x 400 mm (17.91" x 15.75")
Chassis Dimensions	439 mm x 384 mm (17.28" x 15.12")
Install Depth	78 mm (3.07")
Installation Options	Console flush mount, VESA 75
FCC, CE Approved	Yes
Warranty	2 years (2nd year with registration)*

A00177 MN Mariner 19 Sell Sheet-PR1

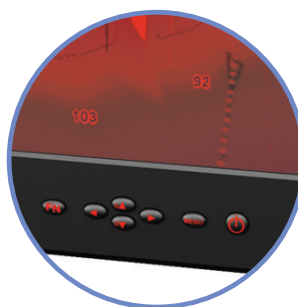
MarineNav products are available in a multitude of configurations to provide maximum flexibility and user convenience. Contact us or visit our website at www.marinenav.ca for more details.

* Product must be registered within first warranty year. Conditions apply. Contact a MarineNav representative or authorized distributor for full details.

MarineNav Ltd. is an ISO 9001:2015 certified company. Our certified Quality Management System ensures that each unit we produce adheres to the strictest standards and complies with customer requirements. While we strive to ensure the accuracy of all items and descriptions in this document, this is not always possible. Specifications, options, and availability are subject to change without notice. Errors and omissions excepted. We reserve the right to limit quantities.



Red Monochrome Night Mode View



Backlit Front Controls



MARINENAV
BUILT NORTH ATLANTIC TOUGH.
TRUSTED EVERYWHERE.



© 2023 MarineNav Ltd.

1466 Panmure Island Rd – Rte 347
Panmure Island PE COA 1R0
902 838-7011
www.marinenav.ca