

MarineNav CG Elite 19

Marine Display

Proudly Canadian 
established
2005

A00177 MN CG Elite 19 Sell Sheet-PR1



Back view showing optional field swappable integrated computer

MarineNav builds tough, true marine-grade displays capable of performing in the harshest environments on earth.

Internationally known for their quality and reliability, our displays are precision built from high strength marine-grade aluminum and finished in salt rated, UV protected powder coating inside and out. Developed to suit a variety of vessels from climate-controlled luxury yachting to more demanding IP65 rated open flybridge military/naval applications and everything in between, there is a MarineNav display suitable for your needs.

The CG Elite Series is our premium class of marine-grade LCD displays featuring optical bonded resistive touchscreen technology that performs even with gloves on. Seeing is believing with our high bright sunlight-readable display. Standard features include one-touch input selection, dedicated backlit front controls that are easy to see and use, and one-touch red monochrome night mode ideal for low light conditions. All MarineNav displays come with a two-year warranty (2nd year with product registration).*

The CG Elite Series displays are available in 12", 15" and 19" sizes and offer several options including enhanced brightness, front and/or rear IP 65 water-resistance, and composite inputs.

CG Elite 19 Features

- 1000 nits brightness (upgradeable)
- 1 VGA, 1 HDMI, 1 DVI, 2 composite
- Optical bonded resistive touchscreen
- Sunlight-readable performance
- IP65 water-resistant front (optional IP65 water-resistant rear)
- Backlit front controls
- Console flush or VESA mounting options
- Available in AC or DC
- Red monochrome night-mode
- TFT active matrix panel, LED backlight
- Integrated computer option
- Two year warranty (2nd year with product registration*)

Optional Integrated Computer Features

- Intel J1900 quad core, upgradeable
- 4 GB DDR3 RAM
- 120 GB Solid State storage
- 2 USB 2.0 ports
- Optional field swappable unit
- Network port

MARINENAV
BUILT NORTH ATLANTIC TOUGH.
TRUSTED EVERYWHERE.



© 2023 MarineNav Ltd.

1466 Panmure Island Rd – Rte 347
Panmure Island PE COA 1R0
902 838-7011
www.marinenav.ca

CG Elite 19 Marine Display

Specifications

Designed,
engineered &
manufactured
on-site. | MN

Features	CGE-19
LCD Display	19" TFT Active Matrix Panel, LED backlight
Integrated Computer	Available option
Brightness	1000 nits (upgradeable)
Contrast	1500:1
Aspect Ratio	5:4
Resolution	1280 x 1024 native
Optimized Multi-Resolution	Up to 1920 x 1200 supported with scaling
View Angle	170(H), 170(V)
Display Colours	16.7 million
Operating Temperature	-10°C to 55°C (14°F to 131°F)
Video Inputs	1 VGA, 1 HDMI, 1 DVI, 2 Composite
Other Inputs	Power, USB
Input Power	9~30V DC or 100~240V AC
Power Consumption	60 watts
Dimming	Wide dimming range to black
Front Window	Optical bonded resistive touch screen
Bezel & Rear Case	High grade marine aluminum
Finish	Salt rated, UV protected powder coating (internal and external)
Enclosure Options	IP65 water-resistant front (optional IP65 water-resistant rear)
Touchscreen	Resistive, polarized; usable with gloved hand
Backlit Front Controls	Yes, with one-touch hotkeys
Bezel Dimensions	455 mm x 400 mm (17.91" x 15.75")
Chassis Dimensions	439 mm x 384 mm (17.28" x 15.12")
Install Depth	78 mm (3.07")
Installation Options	Console flush mount, VESA 75
FCC, CE Approved	Yes
Warranty	2 years (2nd year with registration)*

A00177 MN CG Elite 19 Sell Sheet-PRI

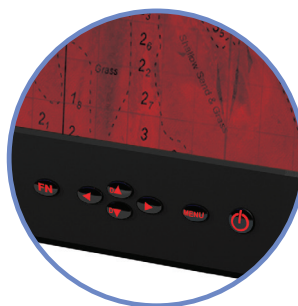
MarineNav products are available in a multitude of configurations to provide maximum flexibility and user convenience. Contact us or visit our website at www.marinenav.ca for more details.

* Product must be registered within first warranty year. Conditions apply. Contact a MarineNav representative or authorized distributor for full details.

MarineNav Ltd. is an ISO 9001:2015 certified company. Our certified Quality Management System ensures that each unit we produce adheres to the strictest standards and complies with customer requirements. While we strive to ensure the accuracy of all items and descriptions in this document, this is not always possible. Specifications, options, and availability are subject to change without notice. Errors and omissions excepted. We reserve the right to limit quantities.



Red Monochrome Night Mode View



Backlit Front Controls



MARINE NAV
BUILT NORTH ATLANTIC TOUGH.
TRUSTED EVERYWHERE.



© 2023 MarineNav Ltd.

1466 Panmure Island Rd – Rte 347
Panmure Island PE COA 1R0
902 838-7011
www.marinenav.ca