

AVM & Fleet Management

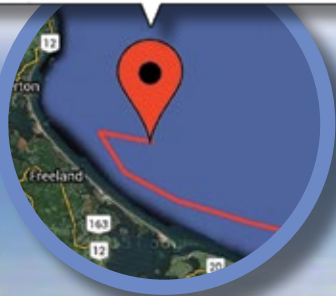
Software Solutions – 2026



Cap Nord

Vessel Status: Active
 Last Updated: 2015-05-11 04:04:23
 Latitude: 46° 13.666' N
 Longitude: 63° 44.837' W
 Course: 311.52
 Speed (kn): 36.83
 Port RPM: 2118.50
 Stbd RPM: 2120.50

Gauges | Trends | Diagnose



Fleet Management technology allows you to manage your entire fleet through an easy-to-use and secure browser interface that is secure and readily available to any web-enabled device.

Designed for clients in commercial, military, and law enforcement sectors, MarineNav's Fleet Management System provides the means to view the location, bearing, and current speed of each vessel in their fleet simultaneously.

Command Centre operators will have access to complete overviews across multiple platforms. All individual ship data (such as steering and throttle positioning, location, heading, current fuel consumption and bingo fuel calculation/time to empty) provide command centre operators with the necessary information to increase vessel deployment efficiency and improve management of large-scale fleet operations.

MARINENAV
 BUILT NORTH ATLANTIC TOUGH.
 TRUSTED EVERYWHERE.



© 2026 MarineNav Ltd.

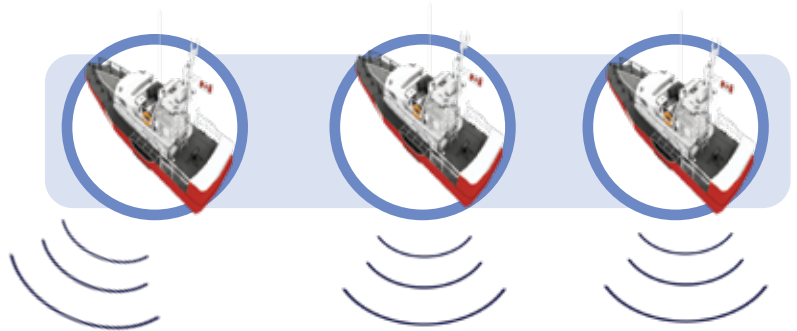
1466 Panmure Island Rd – Rte 347
 Panmure Island PE COA 1R0
 902 838-7011
www.marinenav.ca

AVM & Fleet Management Software

How the System Works

Advanced Vessel Monitoring

Installing an AVM system in each vessel is the first step towards having access to data for your entire fleet. While providing the individual vessel with an all-in-one station for engine information, the AVM can also include the necessary hardware for transmitting this information to a Fleet Management server.



Global Tacking

No matter where your vessels are located, they will securely transmit engine data at an approximate rate of once per second.



Encrypted Data

SSL encryption establishes a secure link for you to safely monitor your data.



Database

Engine data from every single vessel in your fleet is transmitted and safely stored in our database, where it can be accessed from your secure account.



Secure Login

Access your personalized account through Two-Factor Authentication.



Fleet Management Software

A computer with an Internet connection is the only thing required to monitor real-time data for your entire fleet. In addition to refreshing updated vessel information, you can perform full analysis through access to historical data for your entire fleet.



Fleet Data

Data from your entire fleet is prepared to be accessed and monitored in an organized and comprehensive manner.



Mobile Compatible

A responsive interface enables Fleet Management software to adapt to any screen size. Meaning that you can monitor your fleet on the go from your tablet or smartphone.



Crew Accountability

Vessel data provides valuable insight regarding your crew. Ensure that everyone aboard each vessel is performing their duties safely and professionally.



Detailed Reports

Generate, export and save full vessel reports to your computer in a matter of seconds. Reports are saved as CSV files, making them ideal to run on spreadsheet software.



AVM & Fleet Management Software

Overview



D-001_Fleet Management_2026-PR1

Advanced vessel monitoring provides a real-time view of all vessel system data

The Advanced Vessel Monitoring (AVM) system is a combination of hardware and software that allows you to monitor, analyze and export current and historical engine data from one easy-to-use on-board interface.

Our AVM systems are built to perform, proven to last, and are installed on a growing number of Canadian Coast Guard vessels.

Fleet Management technology gives you the power to monitor and manage an entire fleet of vessels

While the AVM is the ideal system for accessing engine information aboard an individual vessel, the data is not accessible beyond the AVM itself.

Fleet Management technology allows you to manage an entire fleet through an easy-to-use and secure system.

Whether you wish to monitor live data updates or browse through a database of historical data, everything you need to know about your fleet will be available at your fingertips.

Our in-browser software is simultaneously user-friendly and super-secure. Simply log in to your personal account to receive a comprehensive overview of every vessel in your fleet.

Beneficial results when incorporating AVM systems and Fleet Management Technologies

Increased trip efficiency

- Access the entire trip history of every vessel in your fleet
- Corresponding data provides insight regarding all engine data
- Compare fuel consumption between different vessels

Improved crew accountability

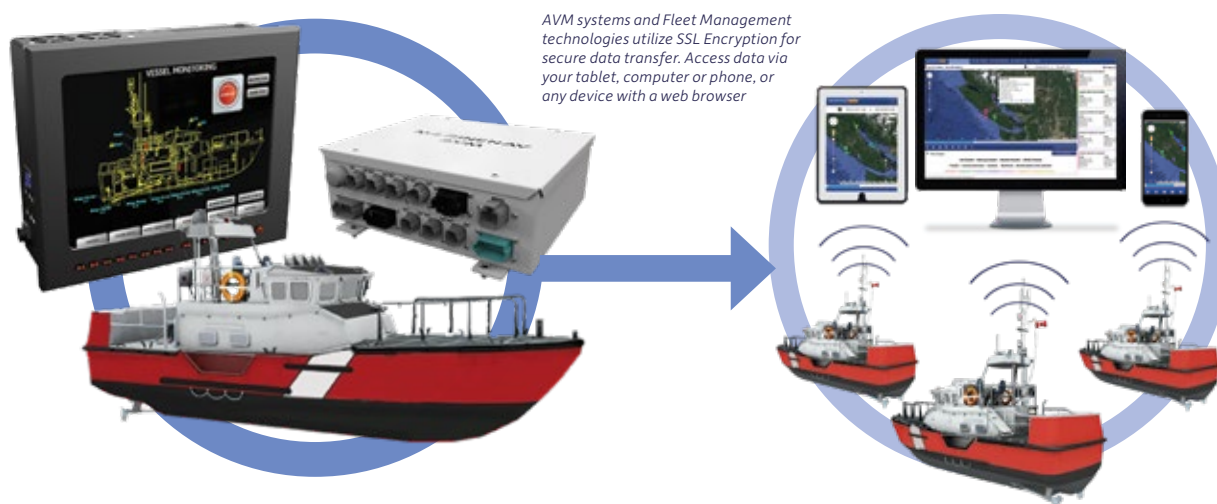
- Pinpoint the exact location of a vessel at any given time
- Ensure engines are being used within regulations
- Encourage responsible operations through active management

Preemptive malfunction identification

- Access visual representations of conspicuous data
- Exercise detailed analysis through Diagnostics & Trends pages
- Prevent engine damage before it occurs

Reduction in operating costs

- Increased efficiency, accountability and malfunction identification will save time, resources, and eliminate unnecessary maintenance costs



Fleet Management Software

Core Features



D-001_Fleet Management_2026-PR1

The Fleet Overview Map page provides a visual representation of every vessel in your fleet

In addition to vessel location, critical engine data can be monitored and analyzed from the table to the right side of the map. The Fleet Overview map page can be set to display live updates or historical data, meaning that vessel information can be monitored in real time or analyzed as a compilation of recorded data.

Maintain an up-to-date account of every vessel in your fleet from one accessible interface. Knowing the situation in real time will improve communication and trip efficiency.

Ensure the best possible response from your fleet during critical missions and be aware of how long each vessel has been active. SAR operations and other time-sensitive situations can be monitored, analyzed and improved upon with the help of engine and location data per each vessel.

Vessel Trends displays the fleet data you want to see

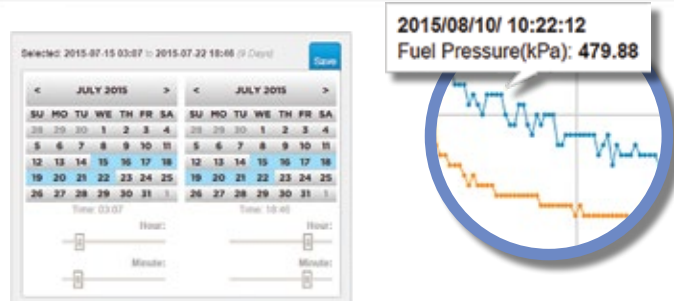
Have full control over the engine data for each vessel in your fleet by using the tools provided on the Trends page. Select data parameters for the exact time period of your choosing and a comprehensive chart will be displayed.

Compare every vessel in your fleet at once or choose to simultaneously view all the engine variables for an individual vessel. Either way, your chart can be modified to display the exact amount of information you require.

Visualized Data

A visual representation of engine information is valuable for understanding how each vessel is performing. Select exact date ranges from which to receive a comprehensive chart of vessel engine data.

Using forensic data to assess engine performance will save a great deal of the time and money required to diagnose mechanical issues.



MARINENAV
 BUILT NORTH ATLANTIC TOUGH.
 TRUSTED EVERYWHERE.



© 2026 MarineNav Ltd.

1466 Panmure Island Rd – Rte 347
 Panmure Island PE COA 1R0
 902 838-7011
 www.marinenav.ca

Fleet Management Software

Core Features



D-001_Fleet Management_2026-PR1



Vessel Gauges

See what your crew sees with gauges that automatically update according to data being transmitted from the vessel. The Gauge Screen provides a visual representation of the data displayed on a vessel through analog gauges.

In addition to displaying live updates, gauges can be set to replay movement through previous vessel activity.

VESSEL
Vessel I
Vessel II
Vessel III
Vessel IV
Vessel V

CFI	FMI
4	13
24	5
22	7
94	8
190	9

Diagnostics

View all error and alarm codes that have been triggered throughout your fleet. The Diagnostics page provides a chronological account of alarm data for each vessel along with a description for each code.

	A	B	C	D	E
1	ID	Date	Status	Latitude	Longitude
2	151969	5/14/2015 9:03	Active	46° 20.853' N	62° 14.8
3	151970	5/14/2015 9:04	Active	46° 20.853' N	62° 14.8
4	151971	5/14/2015 9:04	Active	46° 20.853' N	62° 14.8
5	151972	5/14/2015 9:04	Active	46° 20.853' N	62° 14.8
6	151973	5/14/2015 9:04	Active	46° 20.853' N	62° 14.8

Export Data

Export an organized file containing all of your data in a few simple steps. Select the time period, vessel and engine that you wish to retrieve data from. Your data will download to your computer as a CSV file, meaning that it will be optimized for spreadsheet software such as Microsoft Excel.



In Browser Software - No Download Necessary

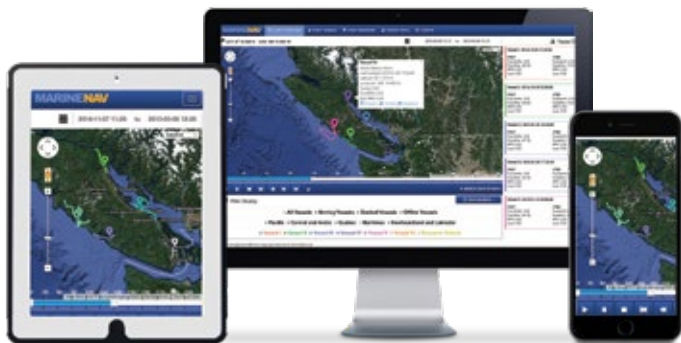
Fleet Management software runs entirely through your Internet browser. In addition to saving space on your personal computer, in-browser software allows you to check in on your assets from any desktop, laptop or mobile device.

Fleet Management Software

Core Features



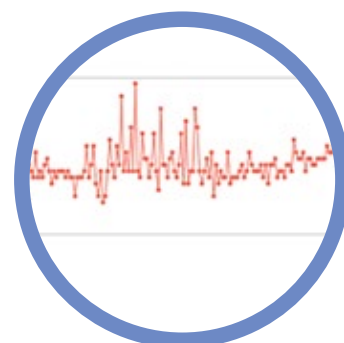
D-001_Fleet Management_2026-PR1



Responsive User Interface

Our user interface has been optimized to fit to any screen dimension. Modify your Fleet Management browser window to your desired size, and all of the pages will adjust into place.

A major benefit of a responsive interface is the freedom to adjust the size of your browser window so you can access multiple applications while monitoring your data.



Adjustable Data Frequency

Fleet Management software allows you to set the amount of data points to load per time period. Setting your desired point intervals will allow you to view your data more clearly in addition to avoiding lengthy loading times.

Fleet Management Software

Security Features

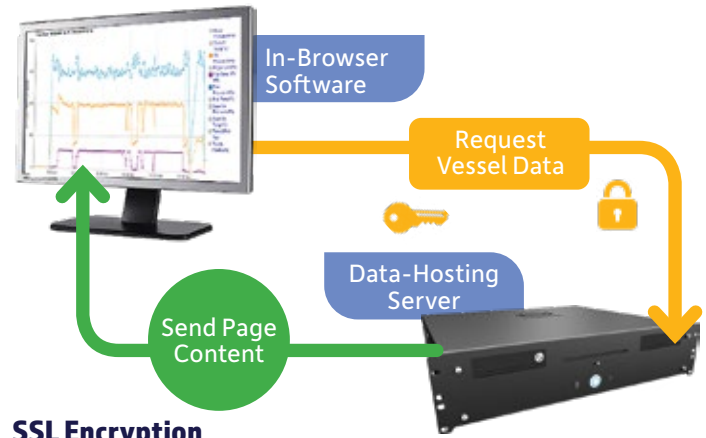


D-001_Fleet Management_2026-PR1



Vessel Data

No matter where your vessel is located, it will transmit engine data to our database at an approximate rate of once per second. To ensure maximum security, all data is encrypted from the moment of its transmission.



SSL Encryption

In-Browser Software: Through SSL (Secure Socket Layer) security technology, an encrypted link is established between our data server and your Fleet Management Account.

Data-Hosting Server: Your information can be privately and safely communicated between the server and your computer or device.



2FA Security

Log into your Fleet Management account from any computer without the concern of compromising your data. Two-factor authentication assures that only authorized individuals may access fleet data.

By using your personal mobile device, you will be granted a random code that regenerates every minute. In addition to your username and password, this personal authentication code is required to log into your Fleet Management account.