

# MarineNav Sonar Systems

## 13" Standard Side-Scan Towfish



**BUILT**  
NORTH ATLANTIC  
**TOUGH**  
**TRUSTED**  
EVERYWHERE

C-026\_Sonar\_Systems-Side-Scan\_Towfish\_2024-PR1

**Eliminate blind searches normally conducted by grapples, divers or ROV systems. Save valuable time by conducting wide sweep scans to track, mark and record GPS positions of interest.**

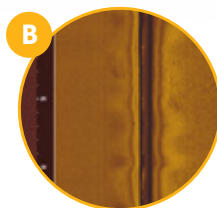
### 3 KNOTS MAXIMUM SPEED. RECOMMENDED RANGE TO SEABED 0 - 75 METERS

Manufactured on-site from marine-grade materials, MarineNav's 13" Standard Side-Scan Towfish is a portable sonar that is easily transported and deployed. Scan large areas of the seabed to spot anomalies, wrecks, ghost gear and other objects. The Side-Scan Towfish is towed beside, or behind your vessel while it is in motion to carry out a smooth survey of a target area simply by lowering or raising the sonar to a fixed depth, thus eliminating potential pitch and roll to provide smoother data. With GPS integrated into the screen, the Side-Scan Towfish sonar can also be used as a chart plotter and is compatible with most detailed marine maps including Navionics providing full navigational charts.



#### **QUICK DEPLOYMENT AND SURVEYING CAPABILITIES**

Standard Side-Scan Topside equipped with a 13" viewing screen. Powered by AC, DC or built-in rechargeable batteries. Deploy the Towfish over the side of boat, or from a Davit and start surveying an area in under five minutes.



#### **THREE ADJUSTABLE SONAR FREQUENCIES**

Adjust sonar to 3 adjustable frequencies of 455Khz, 800 Khz or 1.2MHz, higher frequencies provides more detailed scans of the seabed, while lower frequencies increase sonar scan range.

#### **CREATE WAYPOINTS AND RECORD GPS LOCATIONS**

Identify found objects and anomalies in real-time, and mark targets by creating touch activated waypoints that record GPS co-ordinates. All recorded data is saved for future dive-missions by your ROV system.

**MARINE NAV**  
BUILT NORTH ATLANTIC TOUGH.  
TRUSTED EVERYWHERE.



© 2024 MarineNav Ltd.

1466 Panmure Island Rd – Rte 347  
Panmure Island PE COA 1R0  
902 838-7011  
www.marinenav.ca

# MarineNav Sonar Systems

## 13" Standard Side-Scan Towfish



**BUILT**  
NORTH ATLANTIC  
**TOUGH**  
**TRUSTED**  
EVERYWHERE

C-026\_Sonar\_Systems-Side-Scan\_Towfish\_2024-PR1

### Towfish Specifications:

Recommended Range to Seabed	0m-75m (0-246 ft)
Maximum Speed	3 knots
Length	1265.0 mm (49.80")
Height	252.0 mm (9.92")
Width	314.0 mm (12.36")
Towfish Tube Diameter	51.0 mm (2.00")
Weight <i>(does not include Towfish cable)</i>	3.72 kg (8.2 Lb)
Towfish Cable Length	9.1m (30.0 ft)
External GPS puck	Optional upgrade

### Sonar Specifications:

Side-Scan Imaging Range	76.2m (250 ft) - 800 Khz 152.4m(500 ft) - 1.2MHz 243.8m (800 ft) - 455 Khz
Down Imaging Range <i>(dependent on height from seabed)</i>	76.2m (250 ft) - 800 Khz, 152.4m (500 ft) - 1.2 MHz 243.8m (800 ft) - 455 Khz
Standard CHIRP Sonar Imaging Range	28-250 Khz, 365.7m depth (1200 ft)

### Topside Specifications:

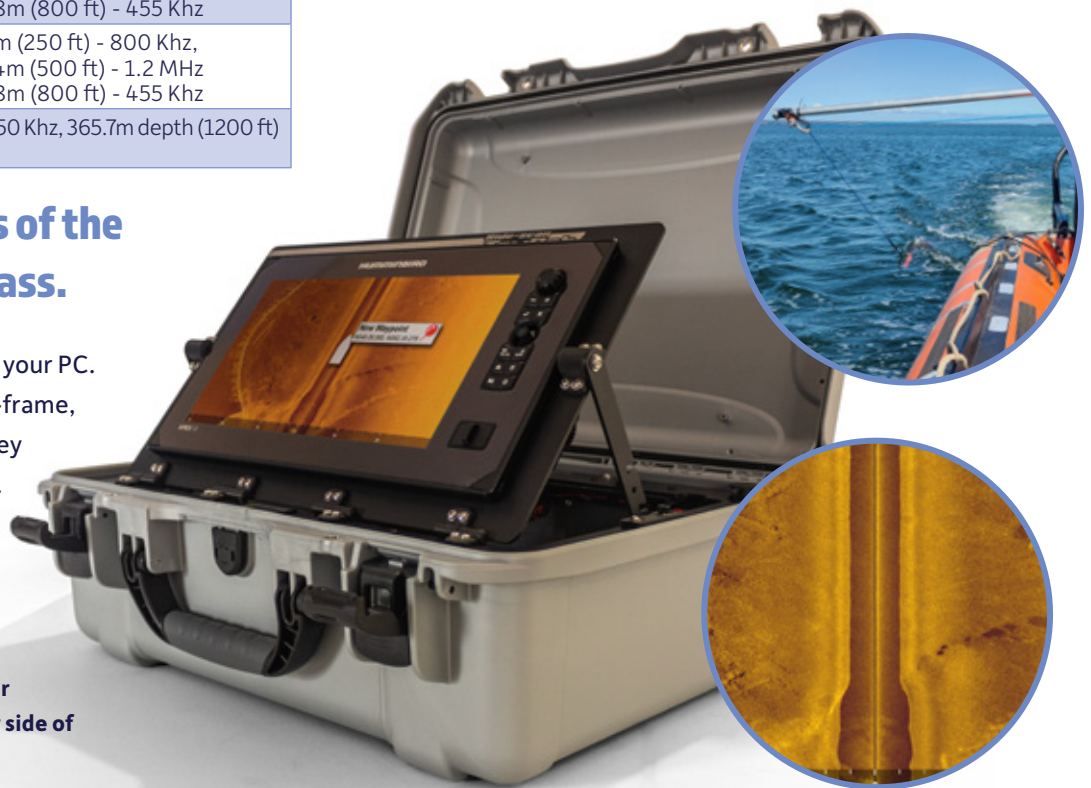
Length	508.0 mm (20.0")
Width	355.6 mm (14.0")
Depth	203.2 mm (8.0")
Weight <i>(with standard 13" screen)</i>	10.61 kg (23.39Lb)
Data Storage <i>(removable SD card)</i>	32 GB
Supply Voltage (V <sub>in</sub> )	9 - 36V DC, built-in AC power source (120/240V AC, built-in connectors for two plug-in Dewalt brand batteries)
Topside Display Size	330 mm (13.0")
Topside Software	ReefMaster - Sonar Viewer (basic software)

## Easily scan large areas of the seabed with a single pass.

Record and replay captured data on your PC. Review sonar sweep data frame-by-frame, forward and reverse and pause on key frames to evaluate sonar anomalies. GPS co-ordinates can be marked via the provided PC software user interface.

At 455Khz, the Side-scan Towfish sonar covers a range of up to 800 ft on either side of your vessel.

The 13" Standard Side-Scan Towfish system includes ReefMaster Sonar Viewer software.



**MARINE NAV**  
BUILT NORTH ATLANTIC TOUGH.  
TRUSTED EVERYWHERE.



© 2024 MarineNav Ltd.

1466 Panmure Island Rd - Rte 347  
Panmure Island PE COA 1R0  
902 838-7011  
www.marinenav.ca

# MarineNav Sonar Systems

## 16" Premium Side-Scan Towfish



**BUILT**  
NORTH ATLANTIC  
**TOUGH**  
**TRUSTED**  
EVERYWHERE

C-026\_Sonar\_Systems-Side-Scan\_Towfish\_2024-PR1

**Eliminate blind searches normally conducted by grapples, divers or ROV systems. Save valuable time by conducting wide sweep scans to track, mark and record GPS positions of interest.**

### 4.8 KNOTS MAXIMUM SPEED. RECOMMENDED RANGE TO SEABED 0 - 150 METERS

Manufactured on-site from marine-grade materials, MarineNav's 16" Premium Side-Scan Towfish is a portable sonar that is easily transported and deployed to scan large areas of the seabed to spot anomalies, wrecks, ghost gear and other objects. The Side-Scan Towfish is towed beside, or behind your vessel while it is in motion to carry out a smooth survey of a target area simply by lowering or raising the sonar to a fixed depth, thus eliminating potential pitch and roll to provide smoother data. With GPS integrated into the screen, the Side-Scan sonar can also be used as a chart plotter and is compatible with most detailed marine maps including Navionics providing full navigational charts.

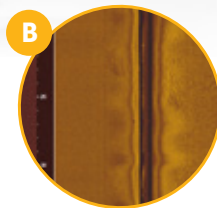


**MADE IN CANADA**



#### **QUICK DEPLOYMENT AND SURVEYING CAPABILITIES**

The Premium Side-Scan Topside equipped with a 16" viewing screen. Powered by AC, DC or built-in rechargeable batteries. Deploy the Towfish over the side of boat, or from a Davit and start surveying an area in under five minutes.



#### **THREE ADJUSTABLE SONAR FREQUENCIES**

Adjust sonar to 3 adjustable frequencies of 455Khz, 800 Khz or 1.2MHz, higher frequencies provides more detailed scans of the seabed, while lower frequencies increase sonar scan range.

#### **CREATE WAYPOINTS AND RECORD GPS LOCATIONS**

Identify found objects and anomalies in real-time, and mark targets by creating touch activated waypoints that record GPS co-ordinates. All recorded data is saved for future dive-missions by your ROV system.

**MARINENAV**  
BUILT NORTH ATLANTIC TOUGH.  
TRUSTED EVERYWHERE.



© 2024 MarineNav Ltd.

1466 Panmure Island Rd – Rte 347  
Panmure Island PE COA 1R0  
902 838-7011  
www.marinenav.ca

# MarineNav Sonar Systems

## 16" Premium Side-Scan Towfish



**BUILT**  
NORTH ATLANTIC  
**TOUGH**  
**TRUSTED**  
EVERYWHERE

C-026\_Sonar\_Systems-Side-Scan\_Towfish\_2024-PR1

### Towfish Specifications:

Recommended Range to Seabed	0m-150m
Maximum Speed	4.8 knots
Length	1332.0 mm (52.44")
Height	285.0 mm (11.22")
Width	331.0 mm (13.03")
Towfish Tube Diameter	73.0 mm (2.87")
Weight <i>(does not include Towfish cable)</i>	5.95 kg (13.12 Lb)
Towfish Cable Length	18.2 m (60.0 ft)
External GPS puck	Optional upgrade

### Topside Specifications:

Length	638.0 mm (25.12")
Width	505.0 mm (19.88")
Depth	224.0 mm (8.82")
Weight <i>(with standard 13" screen)</i>	14.00 kg (30.86 Lb)
Data Storage <i>(removable SD card)</i>	32 GB
Supply Voltage (V <sub>in</sub> )	9 - 36V DC, built-in AC power source (120/240V AC, built-in connectors for two plug-in Dewalt brand batteries)
Topside Display Size	406mm (16.0")
Topside Software	ReefMaster - ReefMaster Pro 2.0 (advanced software)

### Sonar Specifications:

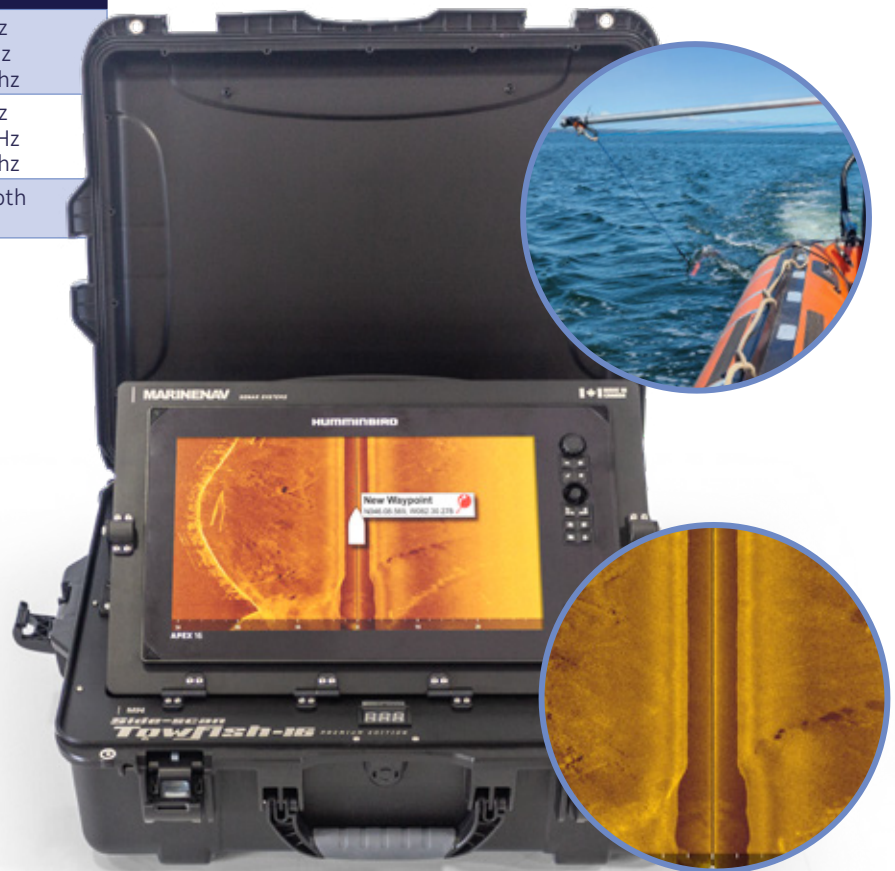
Side-Scan Imaging Range	76.2m (250 ft) - 800 Khz 152.4m(500 ft) - 1.2MHz 243.8m (800 ft) - 455 Khz
Down Imaging Range <i>(dependent on height from seabed)</i>	76.2m (250 ft) - 800 Khz 152.4m (500 ft) - 1.2 MHz 243.8m (800 ft) - 455 Khz
Standard CHIRP Sonar Imaging Range	28-250 Khz, 365.7m depth (1200 ft)

## Easily scan large areas of the seabed with a single pass.

Record and replay captured data on your PC. Review sonar sweep data frame-by-frame, forward and reverse and pause on key frames to evaluate sonar anomalies. GPS co-ordinates can be marked via the provided PC software user interface.

**At 455Khz, the Side-scan Towfish sonar covers a range of up to 800 ft on either side of your vessel.**

**The 16" Premium Side-Scan Towfish system includes ReefMaster Pro 2.0 sonar software.**



**MARINE NAV**  
BUILT NORTH ATLANTIC TOUGH.  
TRUSTED EVERYWHERE.



© 2024 MarineNav Ltd.

1466 Panmure Island Rd – Rte 347  
Panmure Island PE COA 1R0  
902 838-7011  
www.marinenav.ca